

# Tilbury Lodge

DEVELOPMENT INFORMATION



In partnership with:



Get in touch:

020 8680 7532 | [nuviva@ccha.biz](mailto:nuviva@ccha.biz) | [www.nuviva.co.uk](http://www.nuviva.co.uk)

nuviva

# Offering nine 2-3 bedroomed homes in South Croydon

**3**

**Shared Ownership homes**

**6**

**London Affordable Rent homes**

## TYPICAL INTERIOR



**Get in touch:**

020 8680 7532 | [nuviva@ccha.biz](mailto:nuviva@ccha.biz) | [www.nuviva.co.uk](http://www.nuviva.co.uk)

**nuviva**

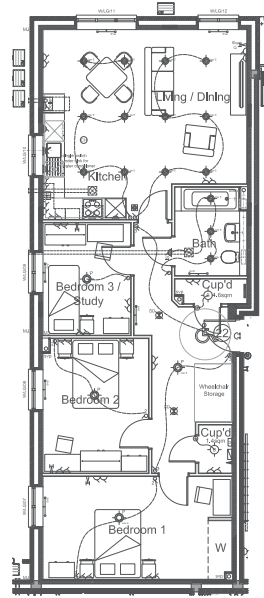
## TYPICAL FLOOR PLAN

The development completed in December 2023 at a cost of £2,125,000.

Architects Taylor Roberts Ltd and contractors Shanly Homes have created stylish and affordable apartments to a high specification.

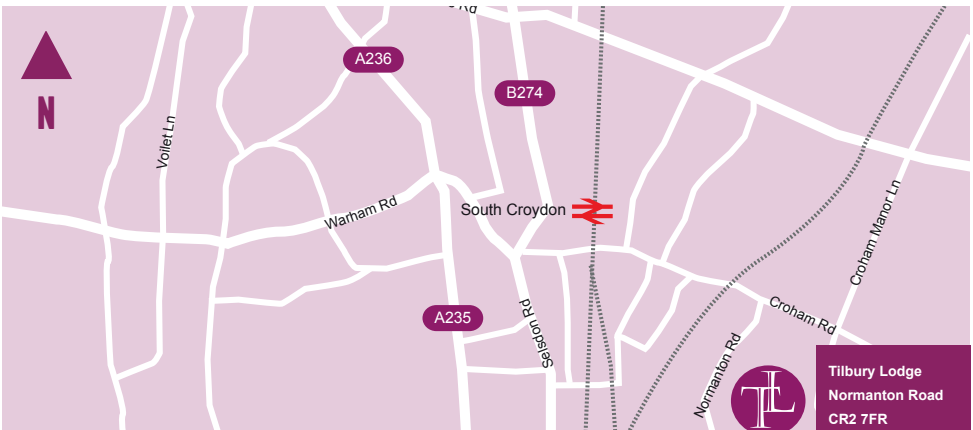
- Fitted kitchen with integrated appliances
- Premium carpet included throughout living areas
- Fitted wardrobes in master bedroom
- Audio door entry system with access via keypad number code

For more information on Tilbury Lodge or our other developments please visit: [www.nuviva.co.uk](http://www.nuviva.co.uk)



## LOCATION

Located near South Croydon, the apartments have fast links into Central London, with off street parking available on selected plots at the development.



In partnership with:

SHANLY  
HOMES

50  
YEARS OF  
PROPERTY  
1909-2019



Get in touch:

020 8680 7532 | [nuviva@ccha.biz](mailto:nuviva@ccha.biz) | [www.nuviva.co.uk](http://www.nuviva.co.uk)

nuviva