

Caraway Court

DEVELOPMENT INFORMATION



In partnership with:



Get in touch:

020 8680 7532 | nuviva@ccha.biz | www.nuviva.co.uk

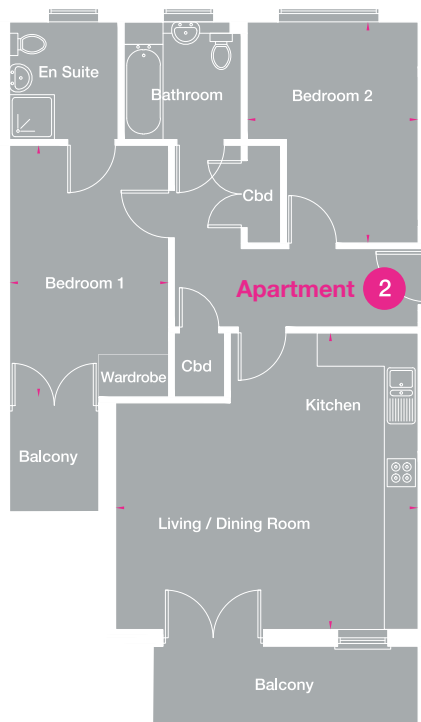
nuviva

Offering nine 1-3 bedroomed homes for Shared Ownership

TYPICAL INTERIOR



TYPICAL FLOOR PLAN



Construction began in August 2017 and completed in March 2019. The development cost £2,793,500 which includes a £252,000 grant provided by the GLA.

All apartments have been carefully constructed to meet the latest building regulations and are built to the highest

of standards. To ensure practical and flexible living, all interior spaces have been thoughtfully designed.

For more information on Caraway Court or our other developments please visit: www.nuviva.co.uk

Get in touch:

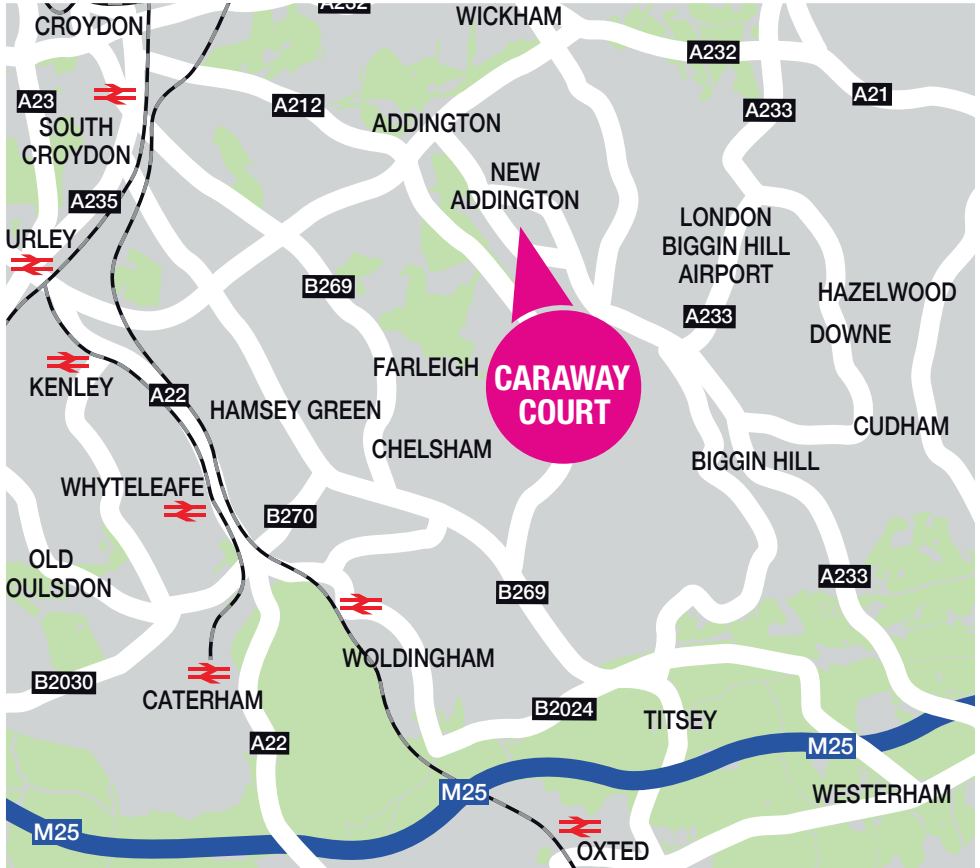
020 8680 7532 | nuviva@ccha.biz | www.nuviva.co.uk

nuviva

LOCATION

Located just outside Croydon in New Addington, Caraway Court is a more affordable option than similar properties in central Croydon, helping local people get on the property ladder.

This development also offers great transport links with the tram taking residents directly to East Croydon.



In partnership with:



Get in touch:

020 8680 7532 | nuviva@ccha.biz | www.nuviva.co.uk

nuviva