

Angel Oak

DEVELOPMENT INFORMATION



In partnership with:



Get in touch:

020 8680 7532 | nuviva@ccha.biz | www.nuviva.co.uk

nuviva

Offering 1-3 bedroom apartments in the heart of Croydon

3

**London
Affordable Rent**

7

**London
Living Rent**

13

**Shared
Ownership**

TYPICAL INTERIOR

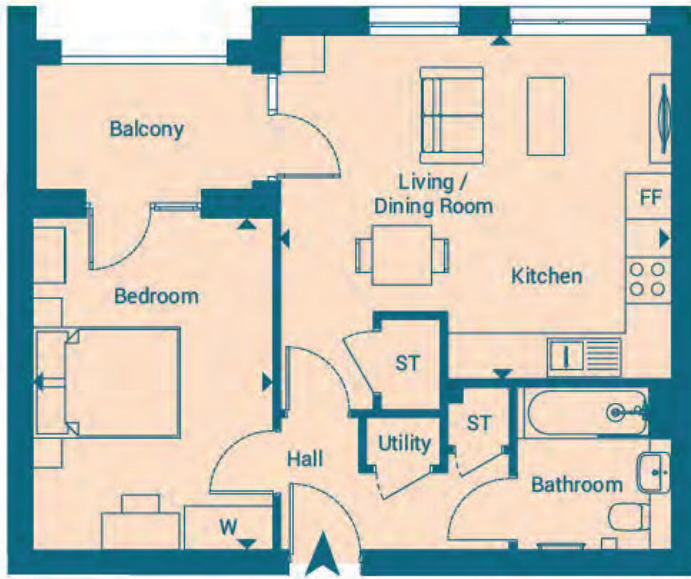


Get in touch:

020 8680 7532 | nuviva@ccha.biz | www.nuviva.co.uk

nuviva

TYPICAL FLOOR PLAN



Angel Oak Point offers a contemporary home, built to reflect an urban lifestyle, with distinctive, large windows allowing ample light to open plan living spaces. The development completed in March 2023 at a development cost of £8.37 million. This included a grant of £740k from the GLA.

For more information on Angel Oak Point or our other developments, please visit : www.nuviva.co.uk

Key features:

- Excellent transport links
- Fully fitted kitchen with integrated appliances
- Resident lift service all floors
- Balcony or terrace to all apartments
- Door entry system
- Secure cycle storage
- 10-year warranty

Get in touch:

020 8680 7532 | nuviva@ccha.biz | www.nuviva.co.uk

nuviva

LOCATION

Angel Oak Point can be found on Sheldon Street, a short walk from local amenities on the high street or Croydon town centre. With a variety of transport options in the area you can get to London in under 20 minutes and Brighton in under 45 minutes.



Get in touch:

020 8680 7532 | nuviva@ccha.biz | www.nuviva.co.uk

nuviva