

1516 London Road

DEVELOPMENT INFORMATION



In partnership with:

ccha



KUROPATWA

Get in touch:

020 8680 7532 | nuviva@ccha.biz | www.nuviva.co.uk

nuviva

Offering seven 1-3 bedroomed apartments in Norbury

TYPICAL INTERIOR



LOCATION

This scheme is located beside Norbury train station with direct transport links in to both London Victoria and East Croydon. Overlooking Norbury Park, 1516 London Road boasts spectacular views.

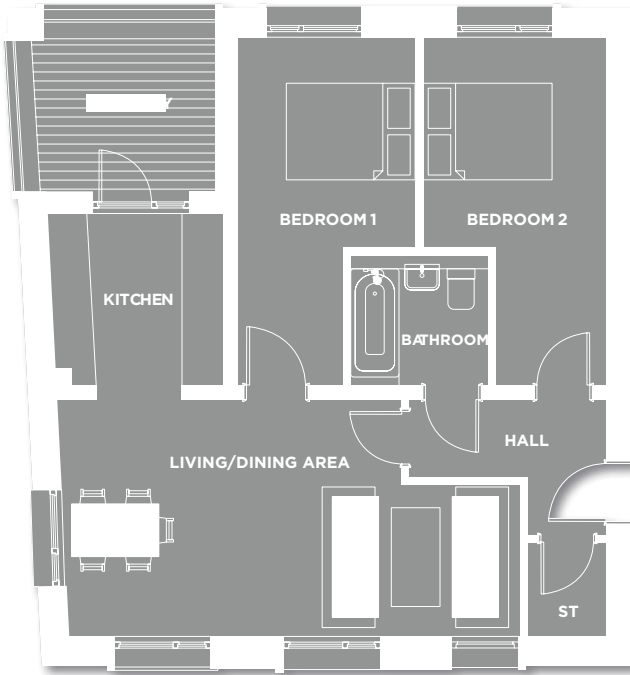


Get in touch:

020 8680 7532 | nuviva@ccha.biz | www.nuviva.co.uk

nuviva

TYPICAL FLOOR PLAN



Built on the historic grounds of Norbury Police Station, the redevelopment has a mixture of sensitively refurbished and brand new apartments offered for Shared Ownership. Construction began in September 2017, completing in February 2019 and cost £2,504,625.

For more information on 1516 London Road or our other developments please visit: www.nuviva.co.uk

All apartments are built to a high specification to ensure long lasting elegance and are perfect for busy city lifestyles.

The finishes include fully integrated appliances, under floor heating and high quality fixtures and fittings along with a 12-year defects warranty.

Get in touch:

020 8680 7532 | nuviva@ccha.biz | www.nuviva.co.uk

nuviva