

The Wollaston Collection

DEVELOPMENT INFORMATION



In partnership with:



Get in touch:

020 8680 7532 | nuviva@ccha.biz | www.nuviva.co.uk

nuviva

Offering 2-bedroom homes in Bromley

5

**London
Affordable
Rent homes**

4

**London
Living Rent
homes**

8

**Shared
Ownership
homes**

8

**Private
Sale homes**

TYPICAL INTERIOR

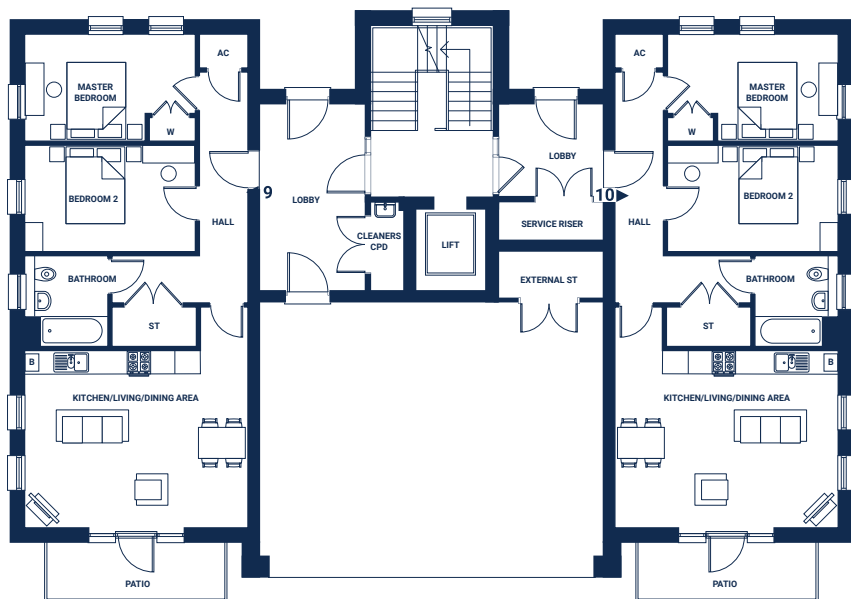


Get in touch:

020 8680 7532 | nuviva@ccha.biz | www.nuviva.co.uk

nuviva

TYPICAL FLOOR PLAN



Architects and contractors McCullough's developed these homes to a high standard, providing spacious apartments, in keeping with the local area. The development completed March 2022, taking 31 months to build at a development cost of approximately £9,000,000.

All apartments feature open-plan living areas, contemporary kitchens with integrated appliances and modern bathrooms.

Key features:

- Fully fitted kitchen with integrated NEFF appliances
- Allocated parking space
- Private balcony/terrace to all apartments
- En-suite to selected apartments
- Cycle storage

For more information on The Wollaston Collection or our other developments, please visit: www.nuviva.co.uk

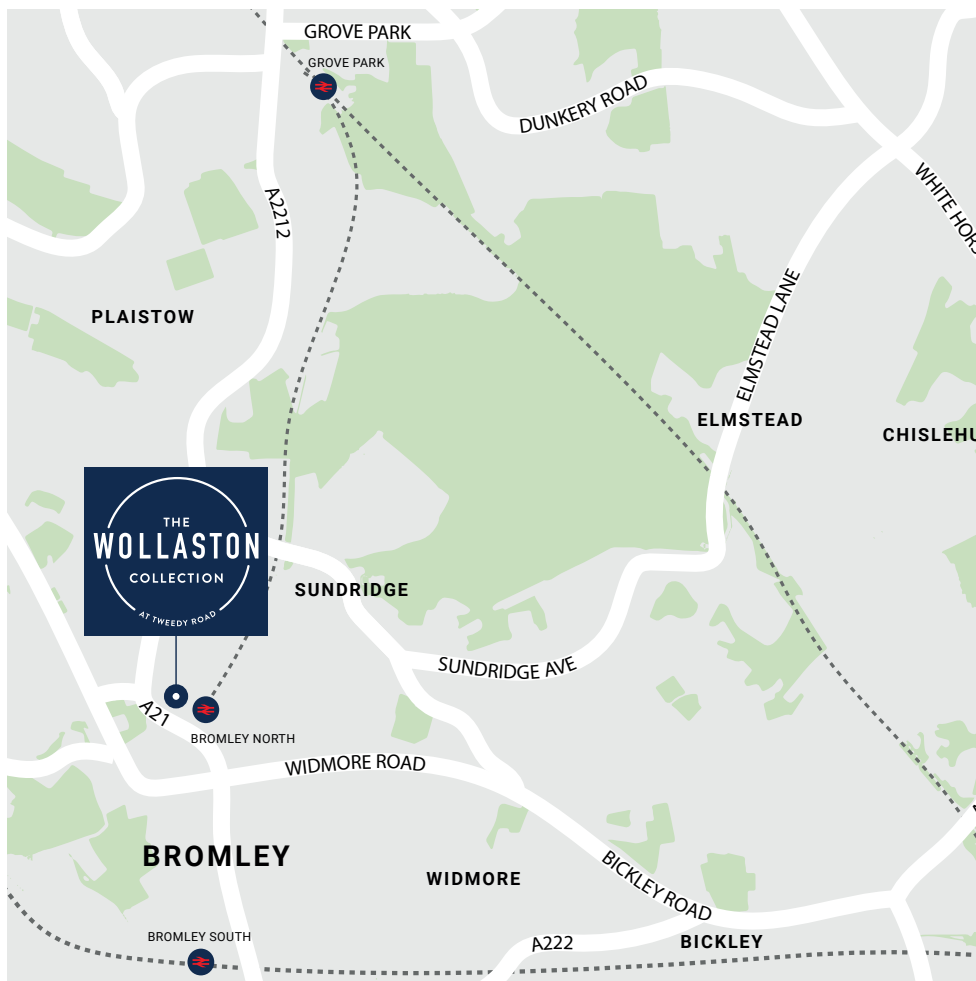
Get in touch:

020 8680 7532 | nuviva@ccha.biz | www.nuviva.co.uk

nuviva

LOCATION

The Wollaston Collection can be found on Tweedy Road and is just a 2-minute walk away from Bromley North station where you can get to London Bridge in under 25 minutes. Bromley offers the premium Glades shopping centre, state-of-the-art fitness clubs, Pavilion Leisure Centre, and much more.



Get in touch:

020 8680 7532 | nuviva@ccha.biz | www.nuviva.co.uk

nuviva