



GREYFRIARS LODGE

DEVELOPMENT INFORMATION



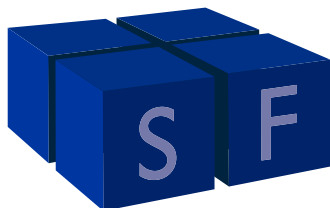
Greyfriars Lodge is a renovated development comprising of six homes for shared ownership. Situated off Middleton Road, Sutton, Greyfriars Lodge is a short distance from Sutton Town Centre and St Helier hospital.

Completed in June 2019, the development offers six, one bedroomed homes. Greyfriars Lodge was developed for CCHA by Spencer Francis.



Photos of all our developments can be found on Twitter [#CCHACconnections](#)

In partnership with

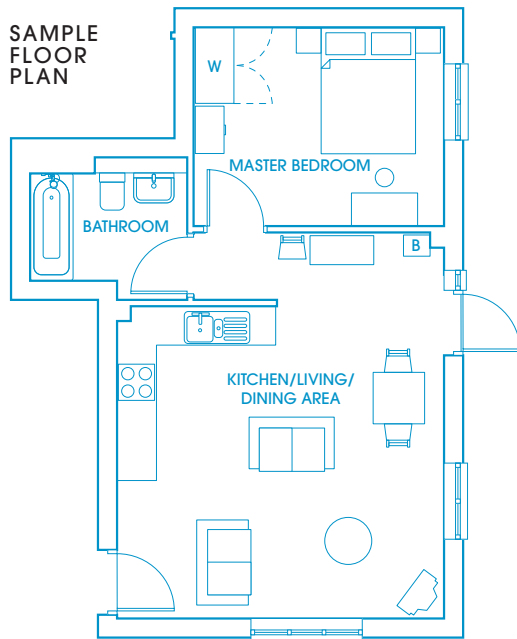


tel: 020 8680 7532 freephone: 0800 054 6710
email: customers@ccha.biz www.ccha.biz

GREYFRIARS LODGE

Previously a supported housing scheme, Greyfriars Lodge has been renovated at a cost of £685,000, which included a grant of £168,000 from the GLA.

With Morden underground station a short six minute drive, Greyfriars Lodge is perfectly placed for residents who travel in and around the Sutton and London area.



SITE PLAN / LOCATION

